

modified date : 5.11.2017

teacher assistant : Sung Hoon Im

How to connect SV210 to host PC(or VM)

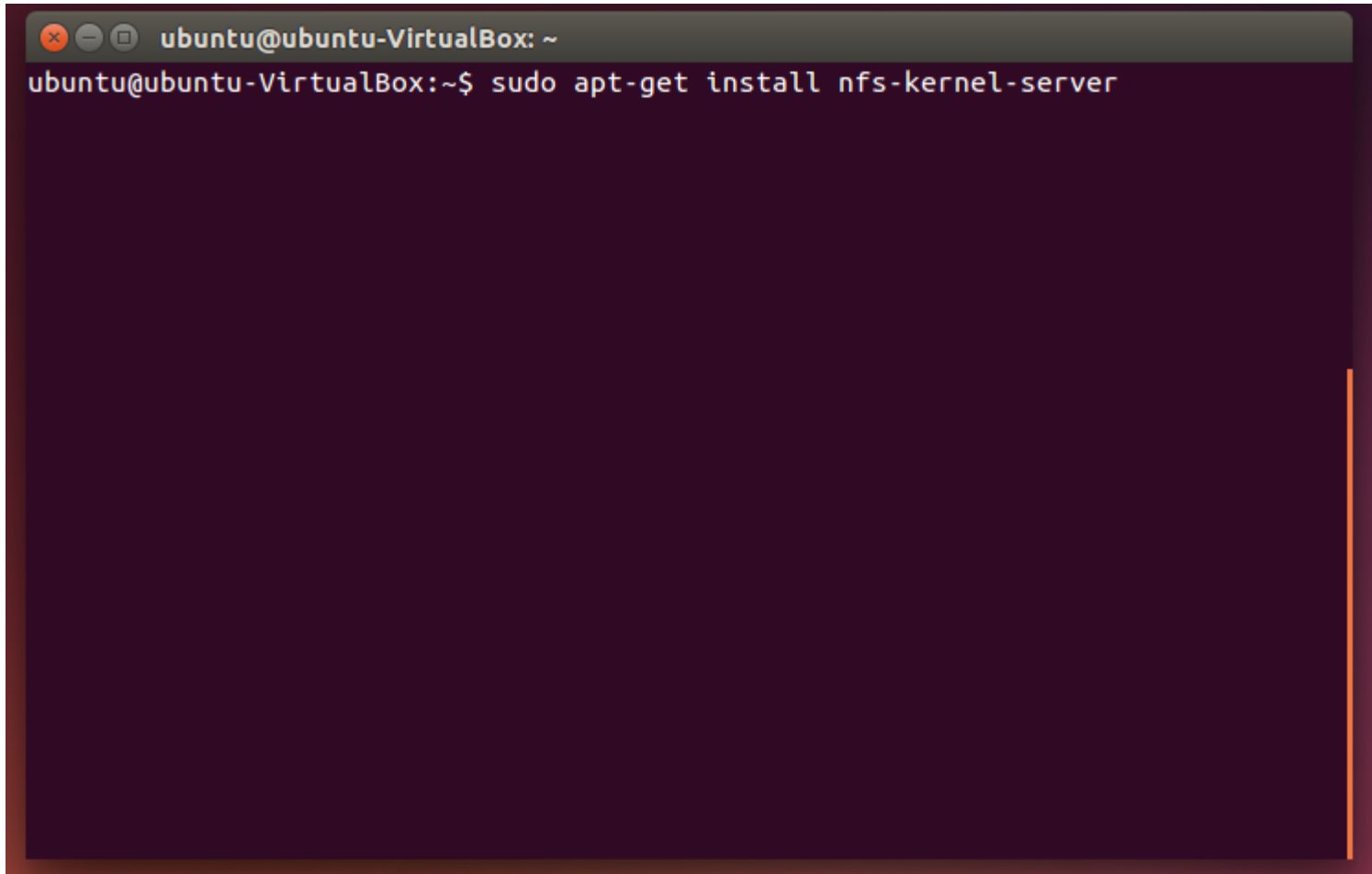
Index

1. Install nfs-server package
2. Prepare requisitions
3. Configure nfs-server
4. Connect to SV210
5. Configure IP
6. Mount nfs

Install nfs-server package

Open Terminal app and do command :

```
sudo apt-get install nfs-kernel-server
```

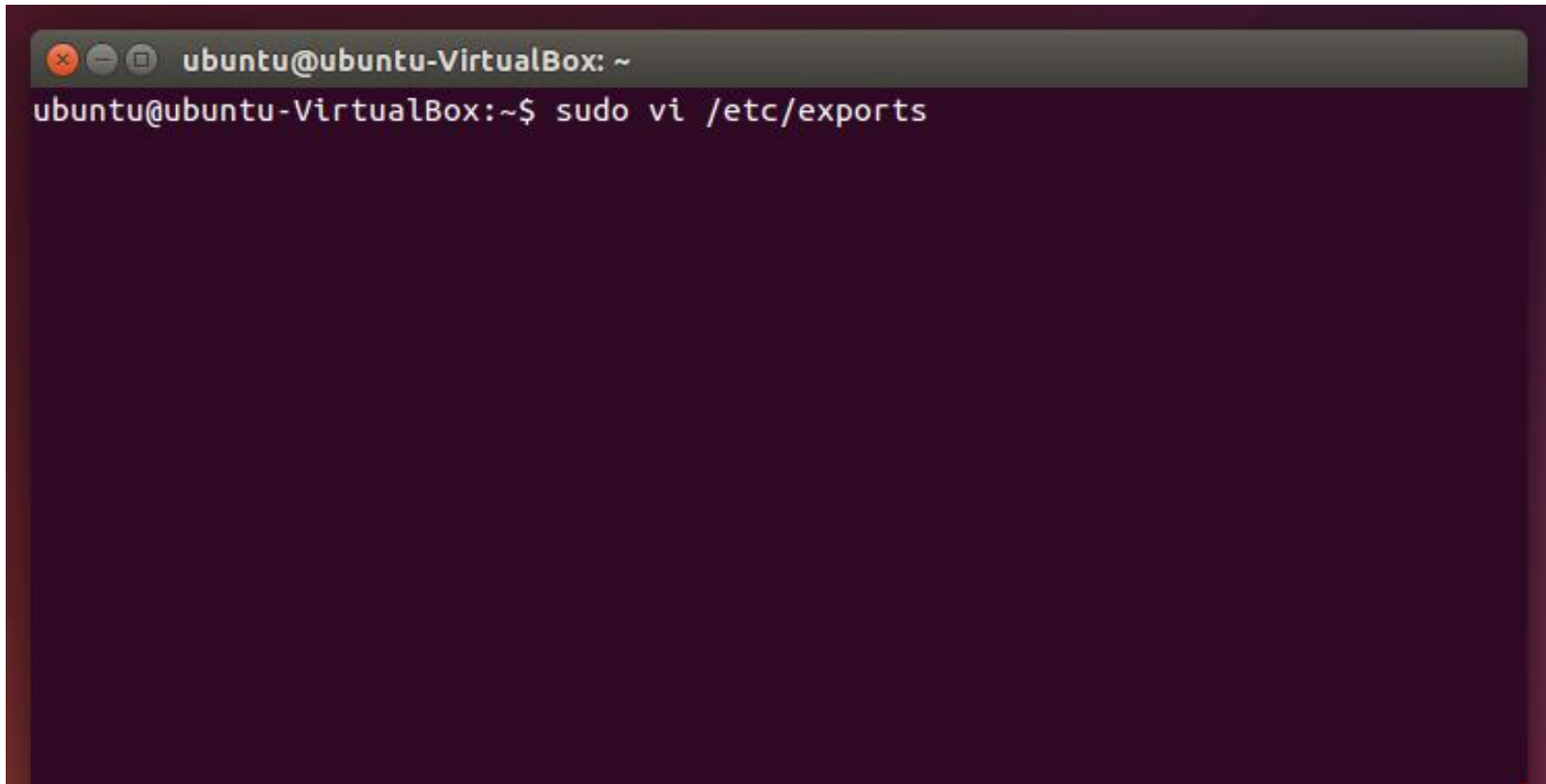
A terminal window with a dark purple background. The title bar at the top reads "ubuntu@ubuntu-VirtualBox: ~". The main area of the terminal shows the command "ubuntu@ubuntu-VirtualBox:~\$ sudo apt-get install nfs-kernel-server" entered at the prompt. The rest of the terminal is empty.

```
ubuntu@ubuntu-VirtualBox: ~  
ubuntu@ubuntu-VirtualBox:~$ sudo apt-get install nfs-kernel-server
```

Configure nfs-server

Open Terminal app and do command :

```
sudo vi /etc/exports
```

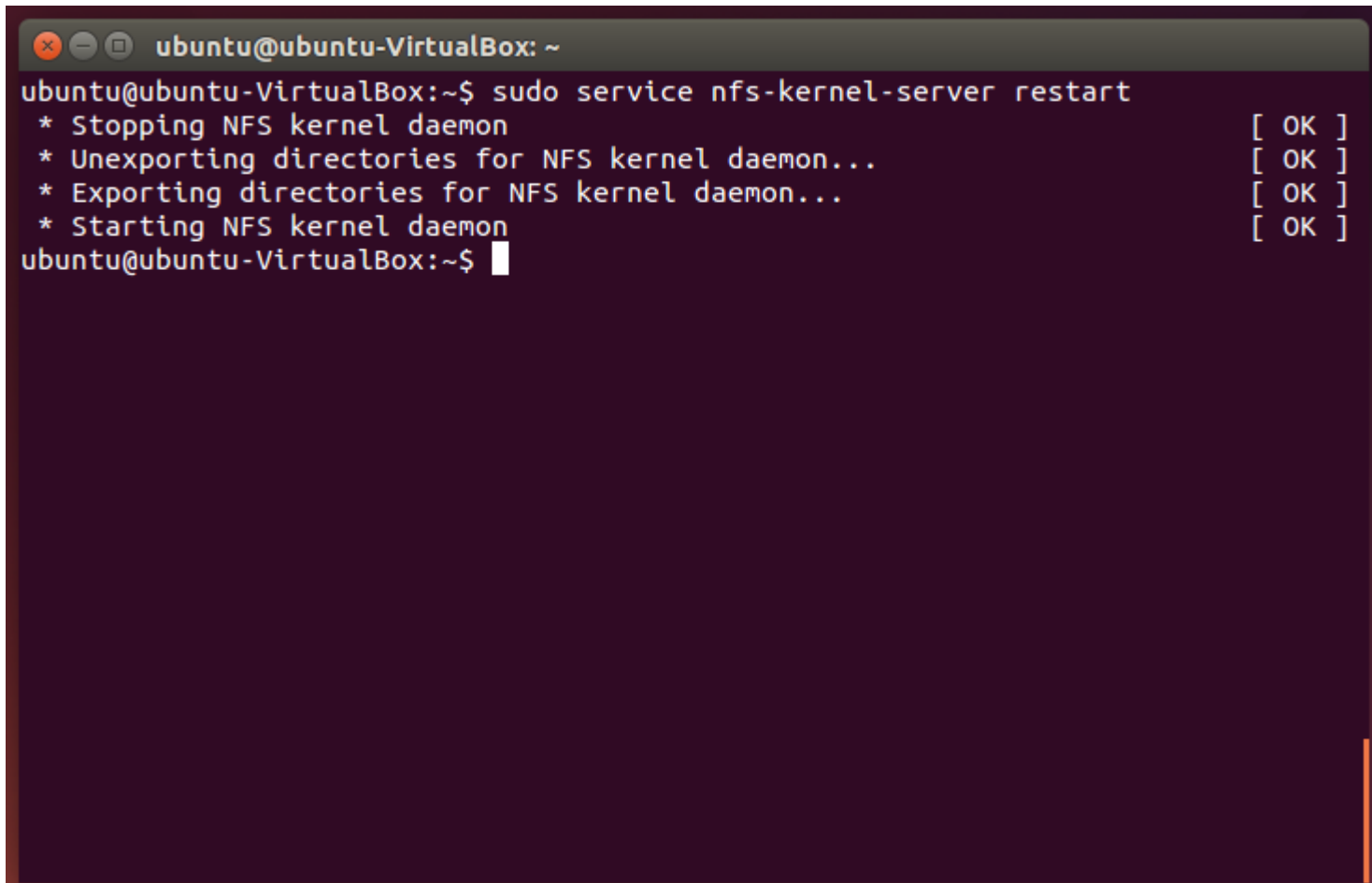
A terminal window with a dark purple background. The title bar at the top shows 'ubuntu@ubuntu-VirtualBox: ~'. The main area of the terminal displays the command 'ubuntu@ubuntu-VirtualBox:~\$ sudo vi /etc/exports' in white text. The rest of the terminal is empty.

```
ubuntu@ubuntu-VirtualBox: ~  
ubuntu@ubuntu-VirtualBox:~$ sudo vi /etc/exports
```


Configure nfs-server

Open Terminal app and do command :

```
sudo service nfs-kernel-server restart
```



```
ubuntu@ubuntu-VirtualBox: ~  
ubuntu@ubuntu-VirtualBox:~$ sudo service nfs-kernel-server restart  
* Stopping NFS kernel daemon [ OK ]  
* Unexporting directories for NFS kernel daemon... [ OK ]  
* Exporting directories for NFS kernel daemon... [ OK ]  
* Starting NFS kernel daemon [ OK ]  
ubuntu@ubuntu-VirtualBox:~$
```

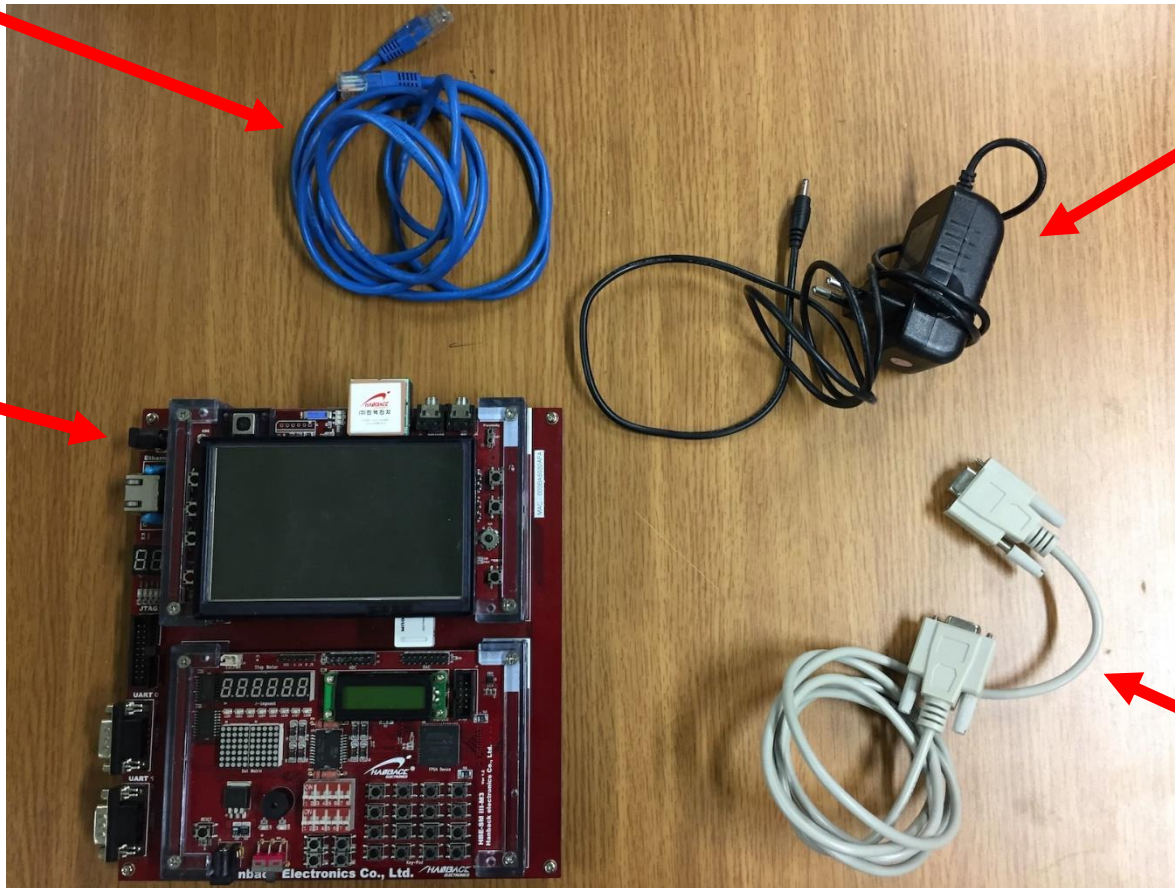
Prepare requisitions

Cross Ethernet Cable

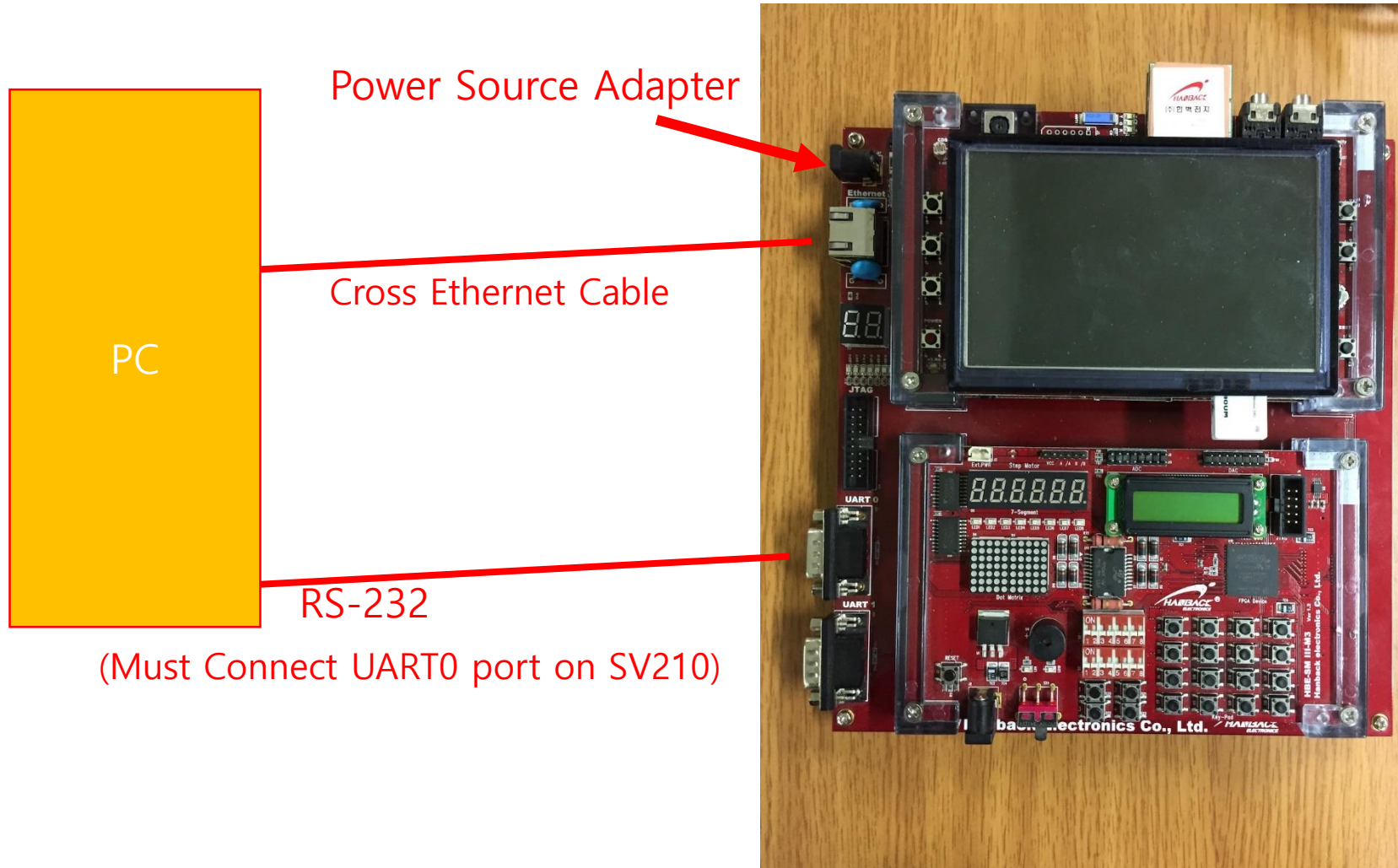
SV210

Power Source Adapter

RS232 for Communicating with Host

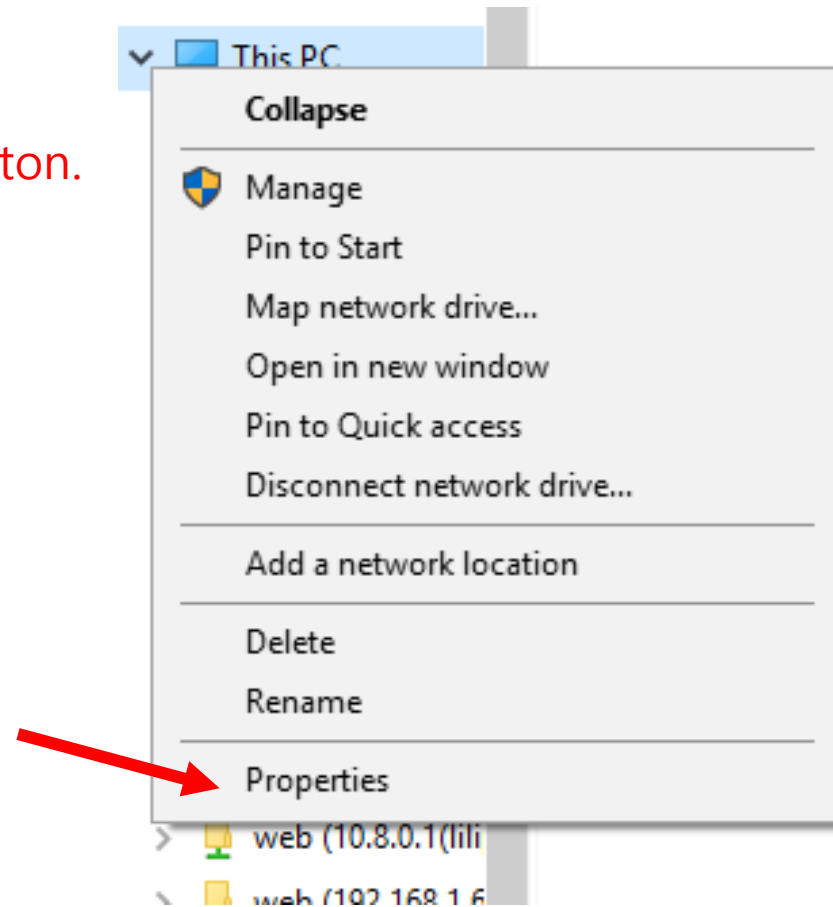


Prepare requisitions

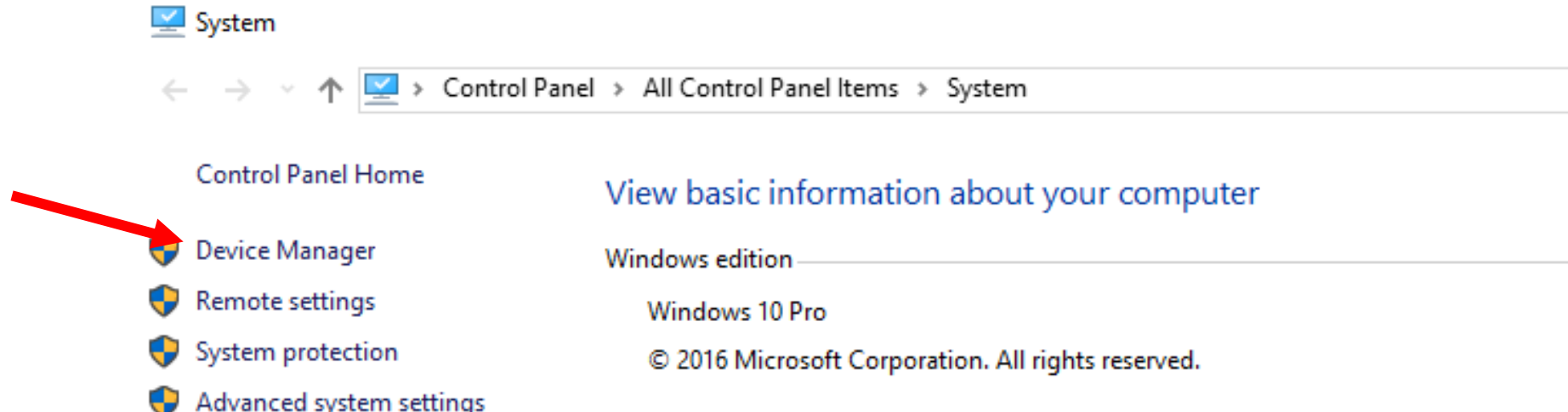


Connect to SV210

Open Windows Explorer.
At the "This PC" folder, click right button.
Click "Properties"



Connect to SV210



The screenshot shows the Windows System control panel. The breadcrumb path is "Control Panel > All Control Panel Items > System". On the left, a list of links includes "Control Panel Home", "Device Manager", "Remote settings", "System protection", and "Advanced system settings". A red arrow points to "Device Manager". On the right, the page title is "View basic information about your computer". Below this, the "Windows edition" section shows "Windows 10 Pro" and "© 2016 Microsoft Corporation. All rights reserved.". The "System" section lists hardware specifications: Processor (Intel(R) Core(TM) i7-7700K CPU @ 4.20GHz 4.20 GHz), Installed memory (RAM) (16.0 GB), System type (64-bit Operating System, x64-based processor), and Pen and Touch (No Pen or Touch Input is available for this Display). The "Computer name, domain, and workgroup settings" section shows Computer name: DESKTOP-Q3GFUFP and Full computer name: DESKTOP-O3GFUFP.

Control Panel Home

Device Manager

Remote settings

System protection

Advanced system settings

View basic information about your computer

Windows edition

Windows 10 Pro

© 2016 Microsoft Corporation. All rights reserved.

System

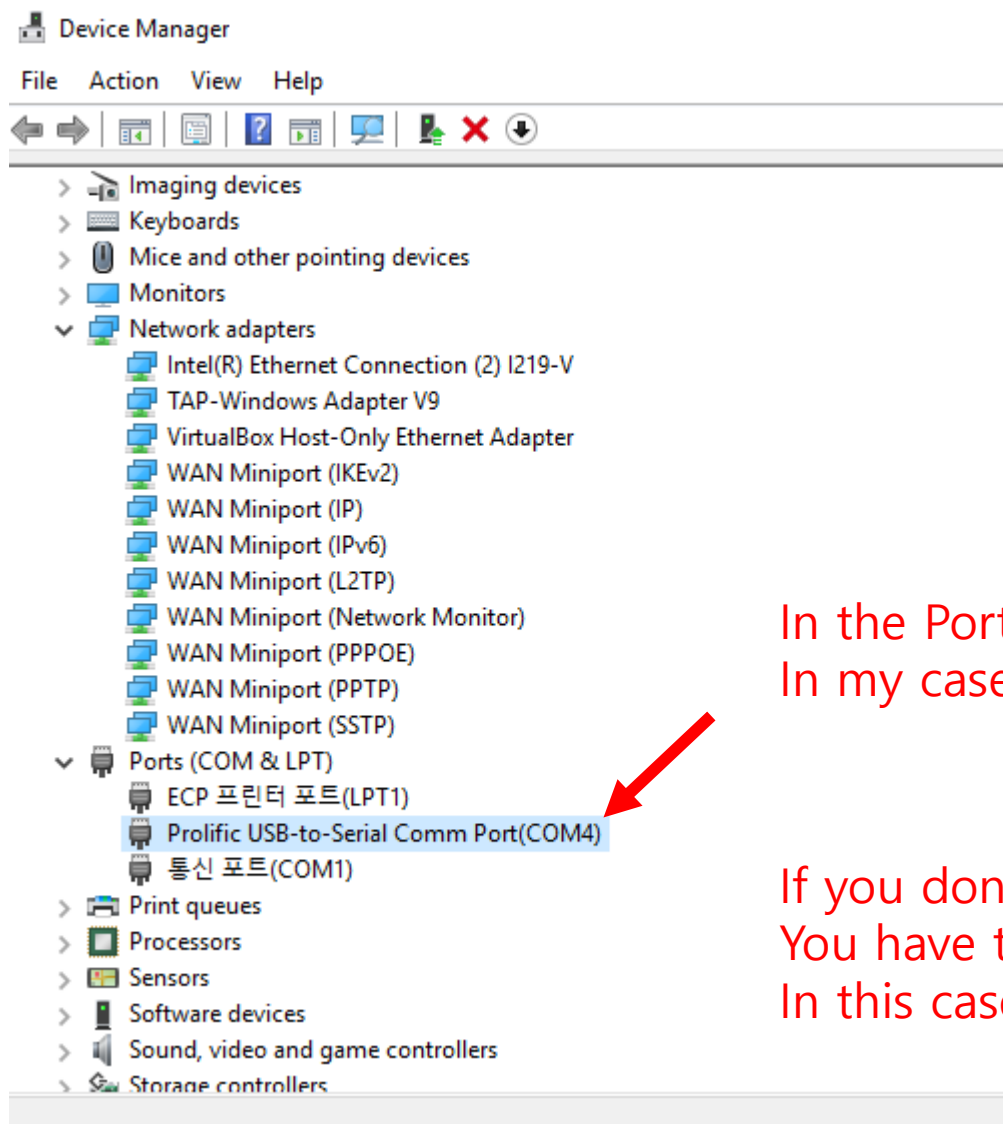
Processor:	Intel(R) Core(TM) i7-7700K CPU @ 4.20GHz 4.20 GHz
Installed memory (RAM):	16.0 GB
System type:	64-bit Operating System, x64-based processor
Pen and Touch:	No Pen or Touch Input is available for this Display

Computer name, domain, and workgroup settings

Computer name:	DESKTOP-Q3GFUFP
Full computer name:	DESKTOP-O3GFUFP

Open "Device Manager".

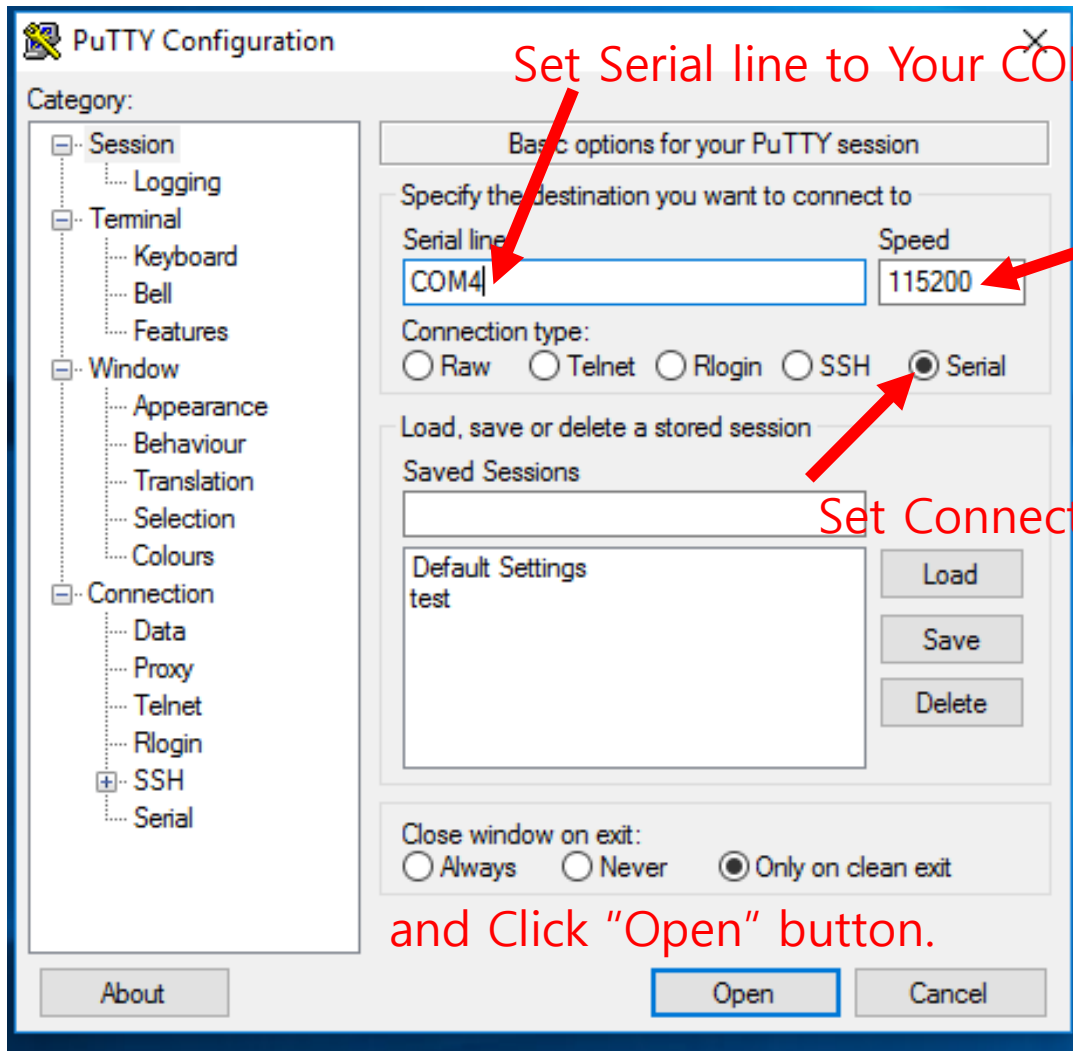
Connect to SV210



In the Ports(COM & LPT),
In my case, my COM port is COM4.

If you don't know your COM port,
You have to try all of the COM port.
In this case, try COM1 and COM4.

Connect to SV210



Set Serial line to Your COM port.

Set Speed to 115200.

Set Connection type to Serial.

and Click "Open" button.

Connect to SV210

```
COM4 - PuTTY
SMIII-SV210 login: error: ioctl() failed!!

HBE-SMIII-SV210 version 0.1 build 2010-11-10
Linux 2.6.32.9 on a armv7l

SMIII-SV210 login: root

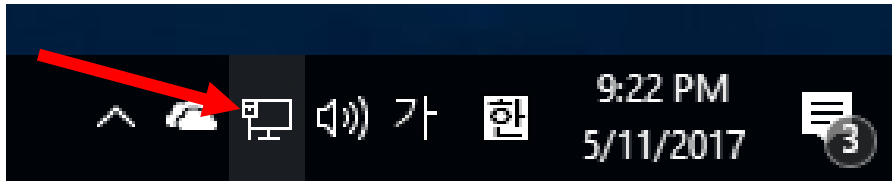
=====
##      ##      ##      ##      ##      #####      ##      #####      ##      ##
##      ##      ####      ##      ##      ##      ##      ####      ##      ##      ##
##      ##      ##      ##      ####      ##      ##      ##      ##      ##      ##      ##
#####      #####      ##      ##      ##      #####      #####      ##      ##      ##
##      ##      ##      ##      ##      ##      ##      ##      ##      ##      ##      ##
##      ##      ##      ##      ##      ##      ##      ##      ##      ##      ##      ##
##      ##      ##      ##      ##      ##      ##      ##      ##      ##      ##      ##

Hanback Electronics Embedded Linux System (HBE-SMIII-SV210)
=====

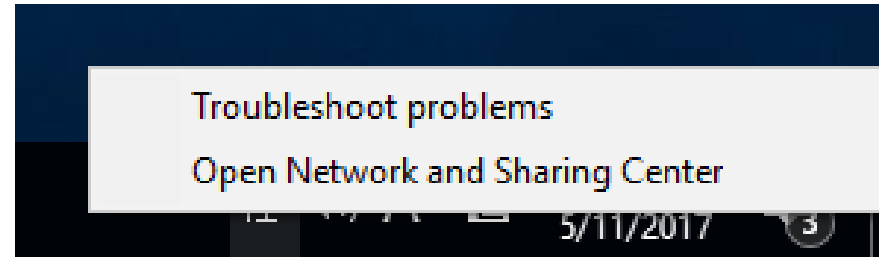
tgetent: warning: termcap entry too long
[root@SMIII-SV210 ~]#
```

Turn SV210 on.
Login user is root.

Configure IP



Right Click



Open Network center.

Configure IP

[Control Panel Home](#)

[Change adapter settings](#)

[Change advanced sharing settings](#)

View your basic network information and set up connections

View your active networks

네트워크
Public network

Access type: Internet
Connections: 이더넷

식별되지 않은 네트워크
Public network

Access type: Internet
Connections: 이더넷 2

Change your networking settings



[Set up a new connection or network](#)

Set up a broadband, dial-up, or VPN connection; or set up a router or access point.



[Troubleshoot problems](#)

Diagnose and repair network problems, or get troubleshooting information.

See also

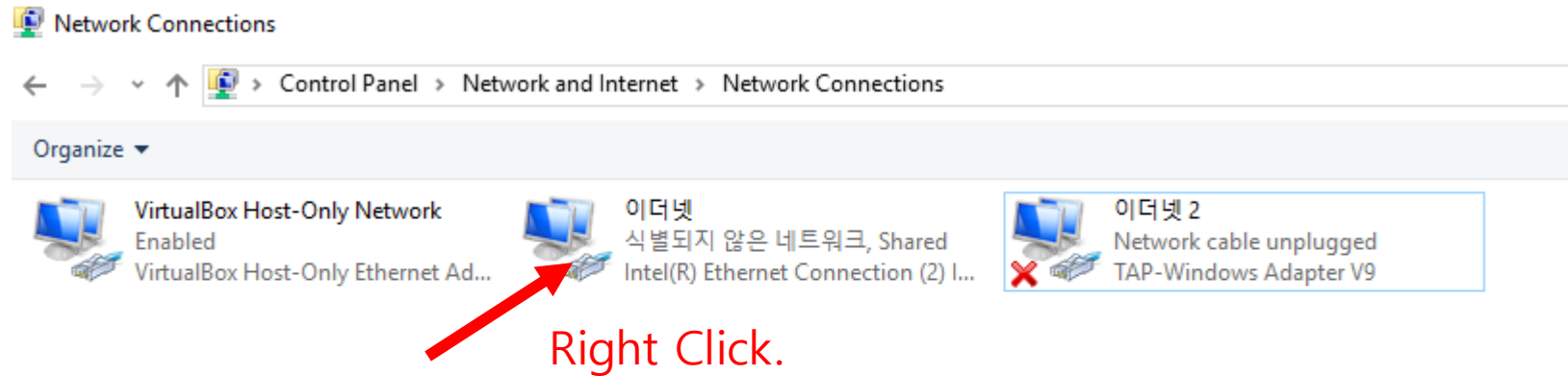
[HomeGroup](#)

[Infrared](#)

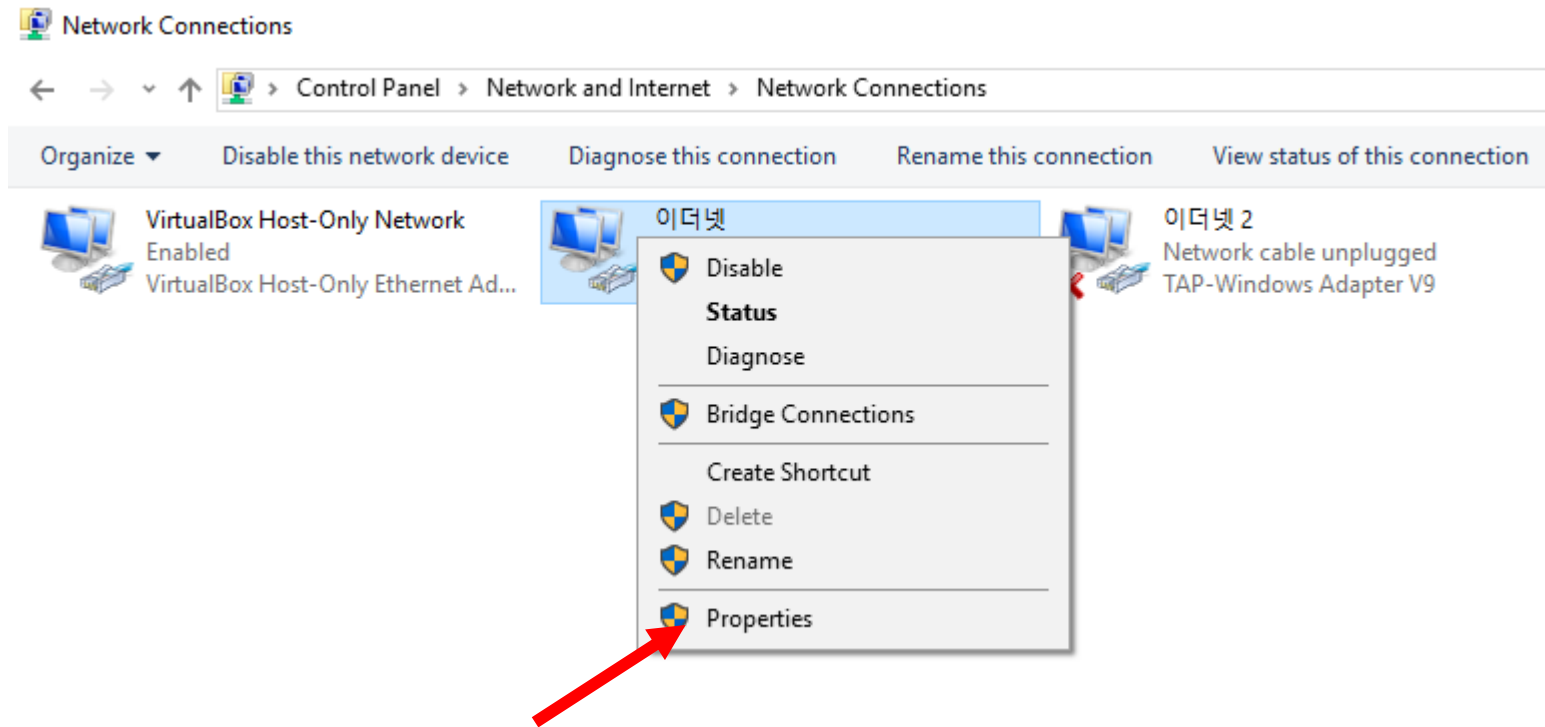
[Internet Options](#)

[Windows Firewall](#)

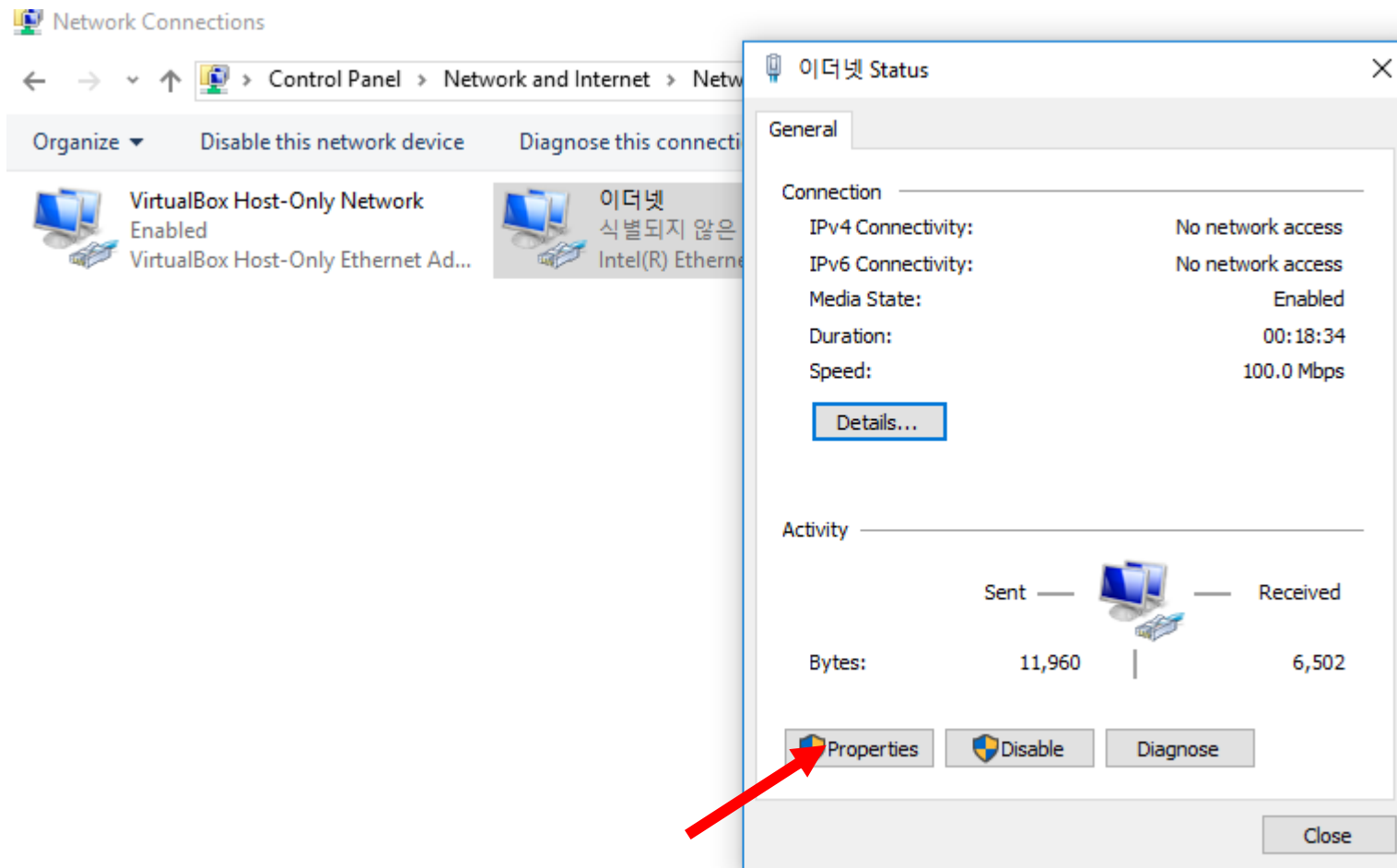
Configure IP



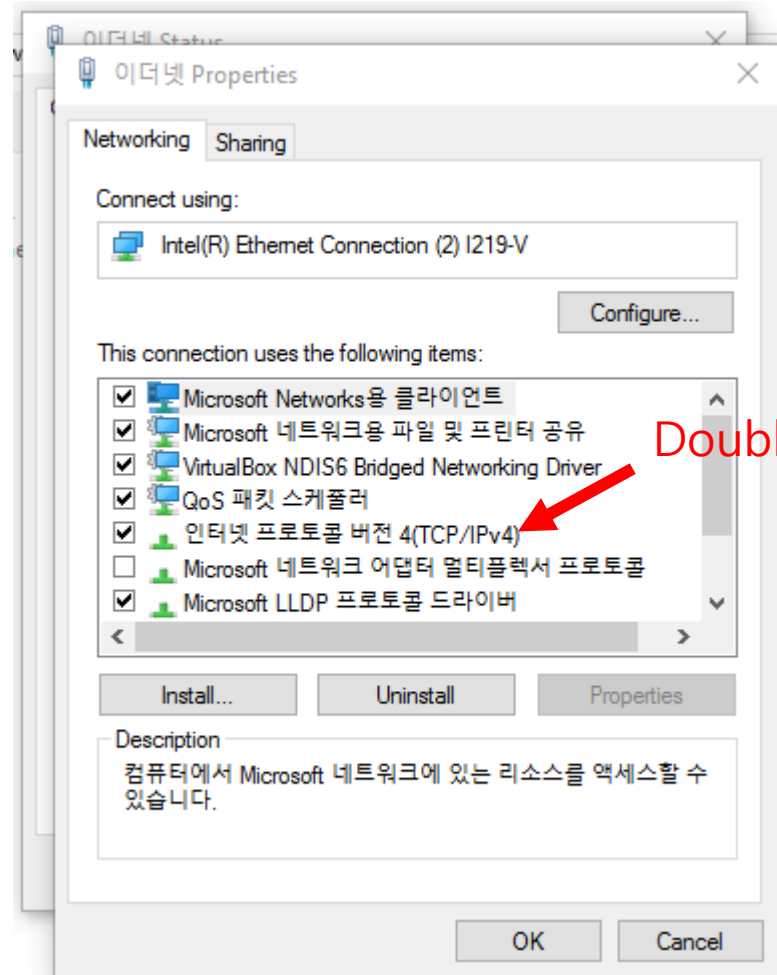
Configure IP



Configure IP

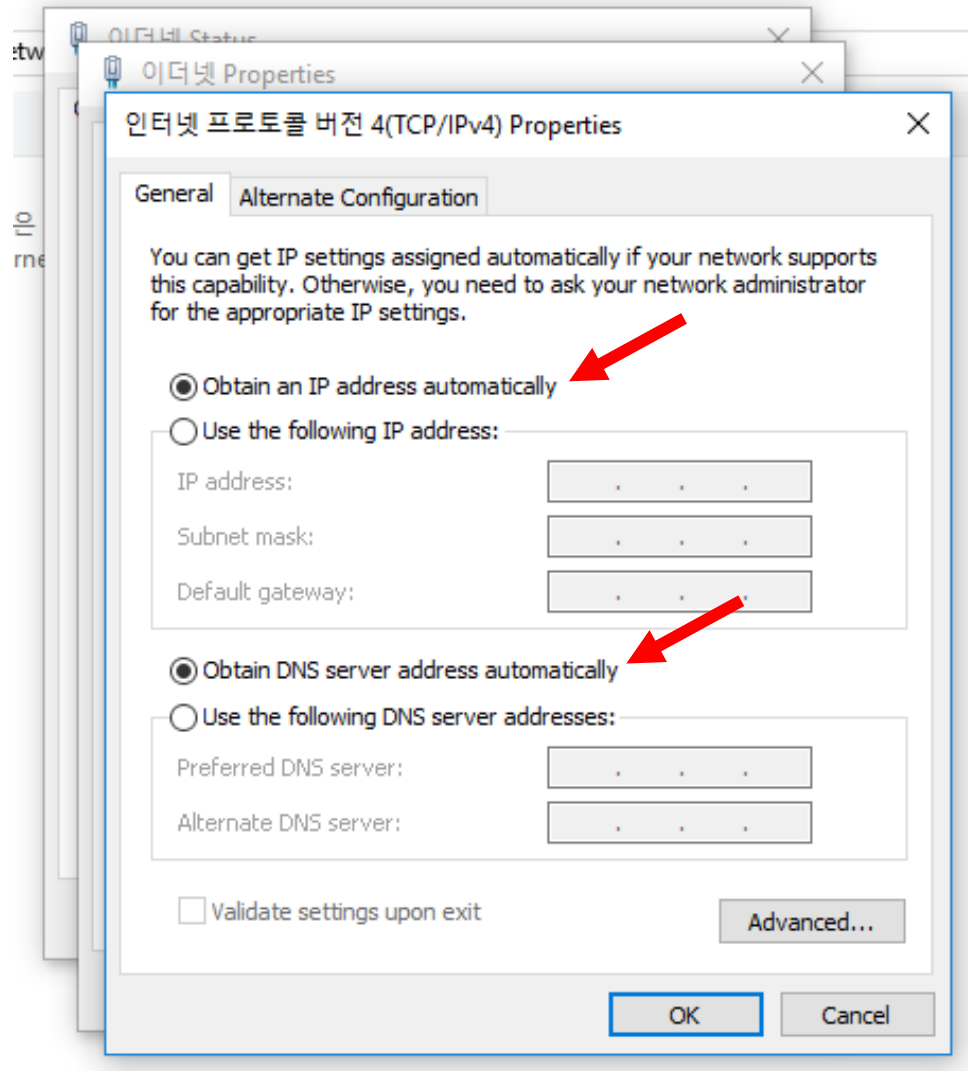


Configure IP

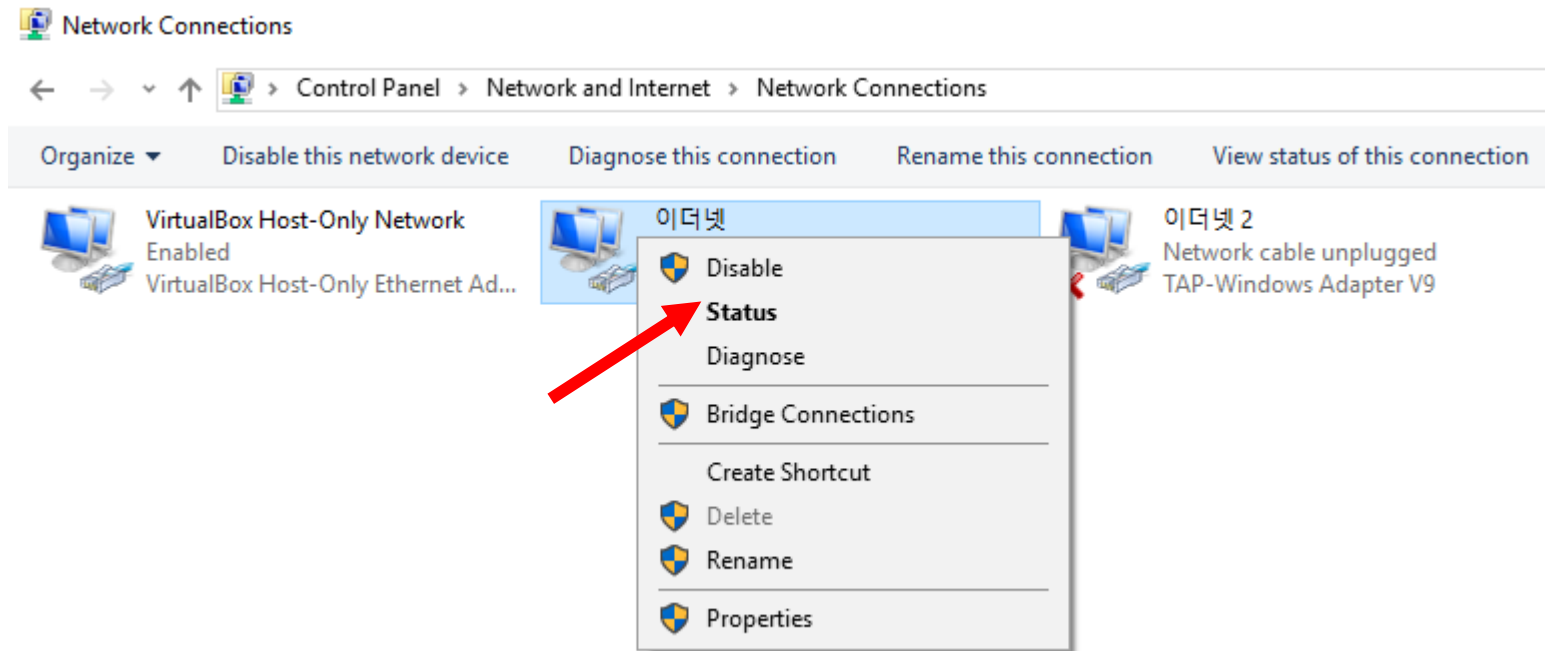


Double Click.

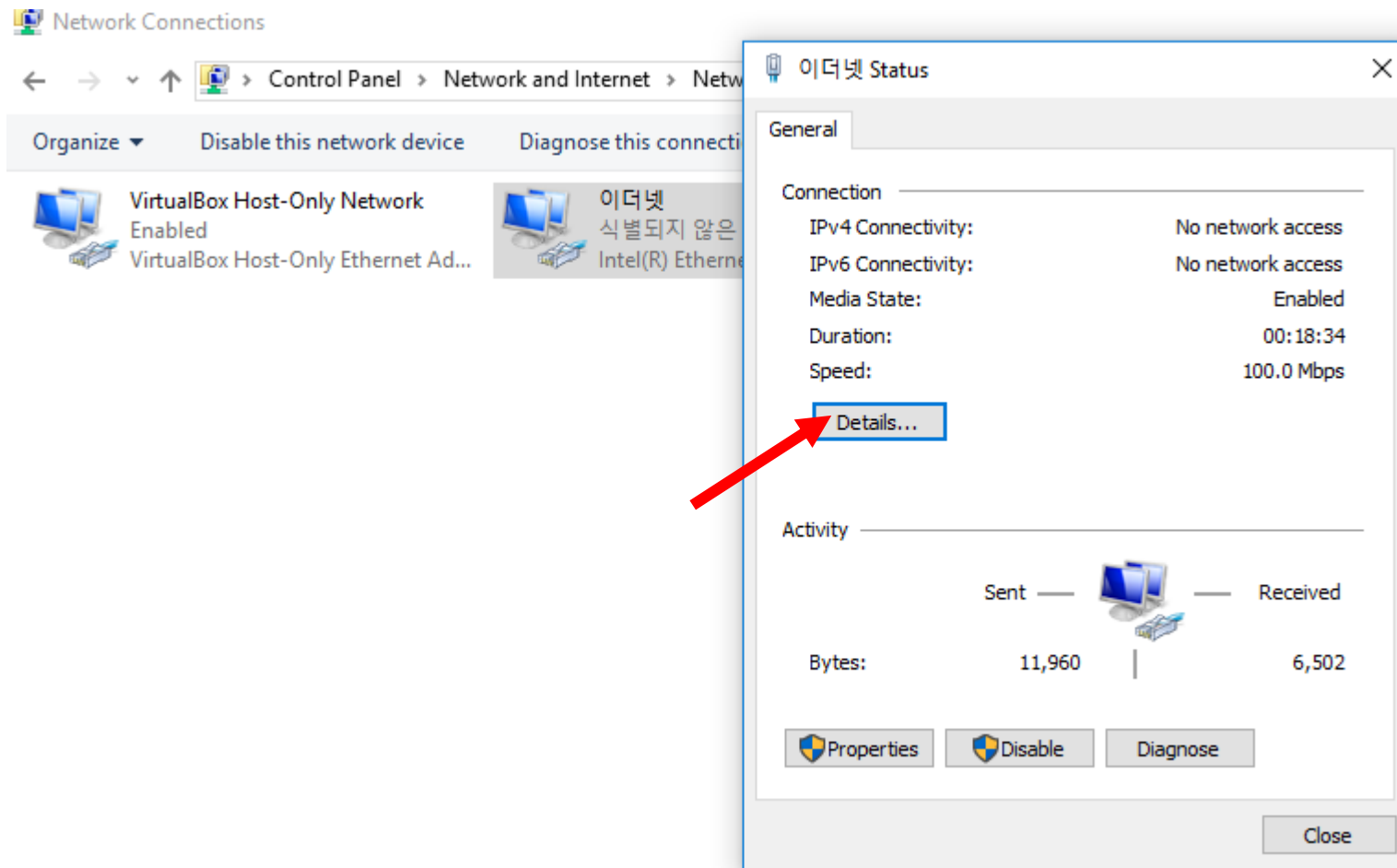
Configure IP



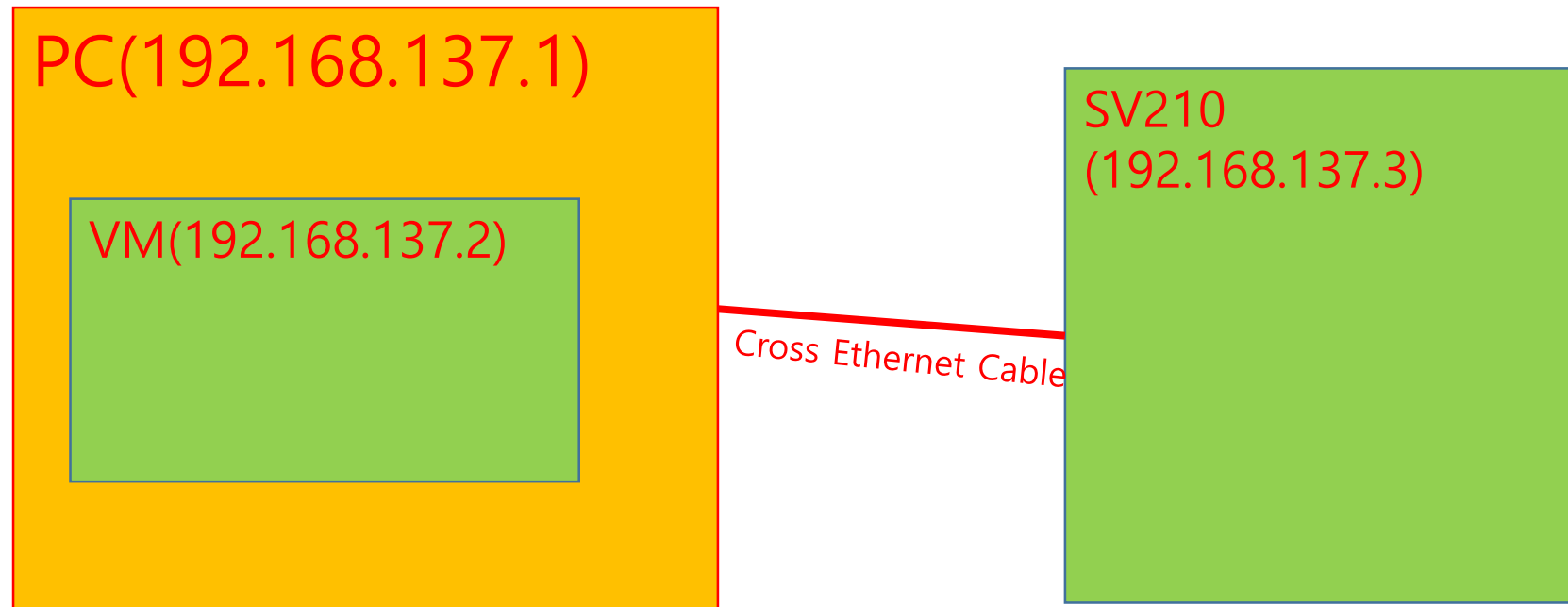
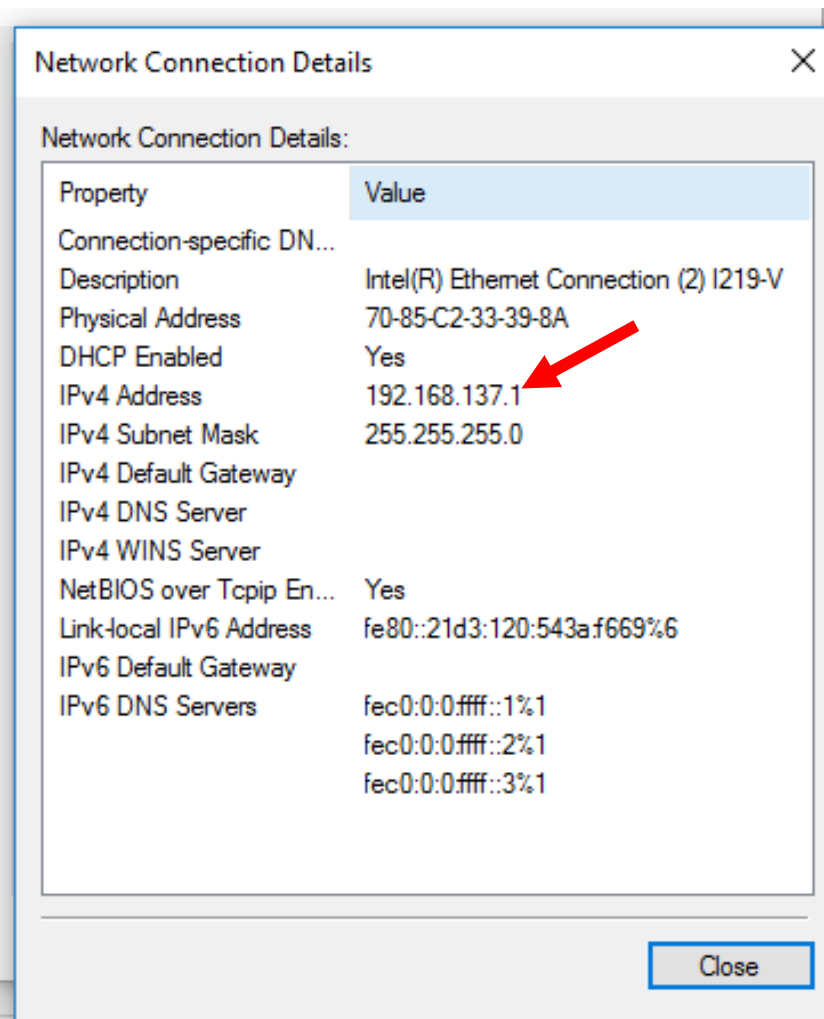
Configure IP



Configure IP

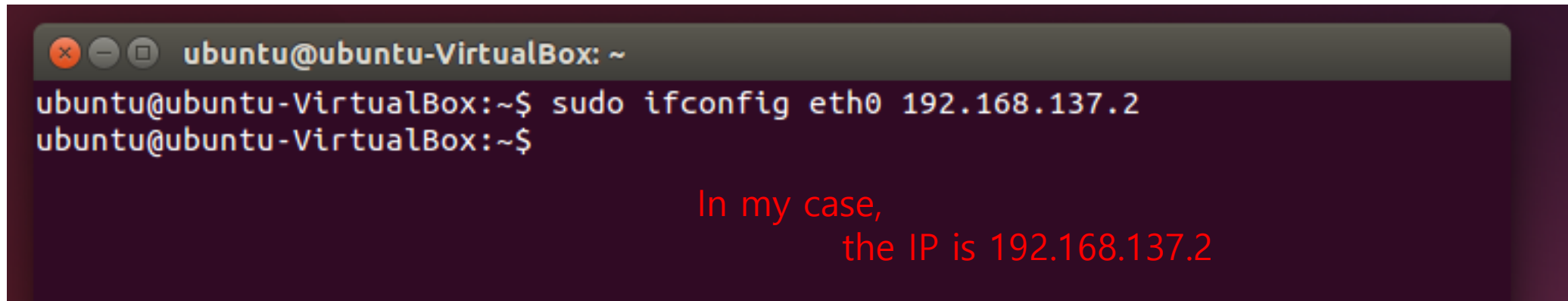


Configure IP



Configure IP

In the Ubuntu, Try the command.
ifconfig eth0 @.@.@

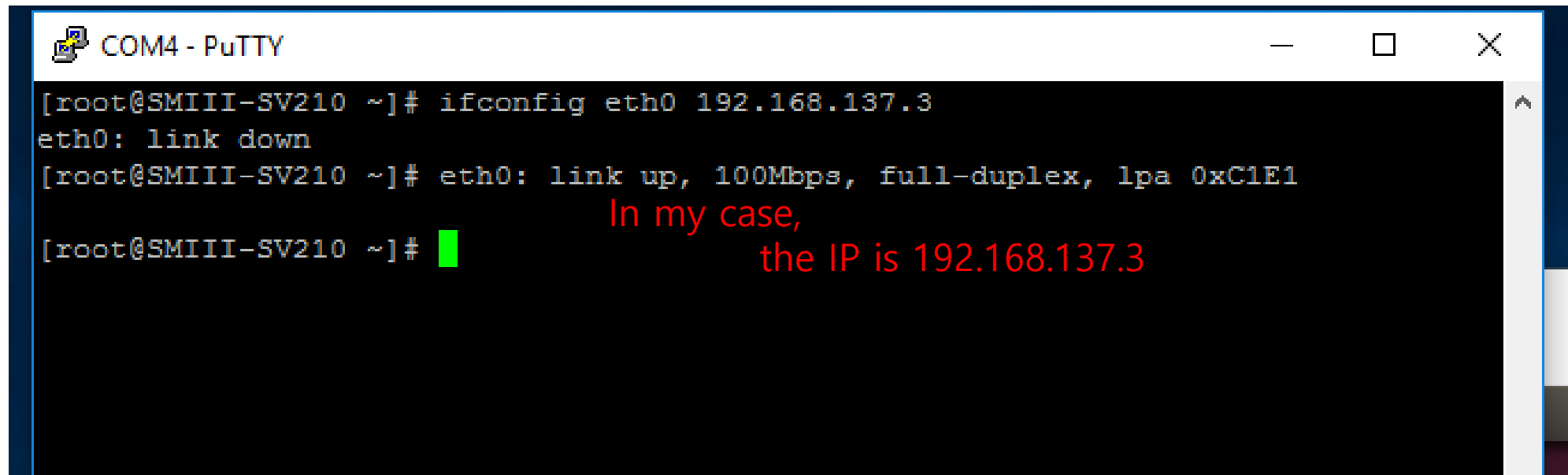


```
ubuntu@ubuntu-VirtualBox: ~  
ubuntu@ubuntu-VirtualBox:~$ sudo ifconfig eth0 192.168.137.2  
ubuntu@ubuntu-VirtualBox:~$
```

In my case,
the IP is 192.168.137.2

Configure IP

In the Putty, Try the command.
ifconfig eth0 @.@.@.

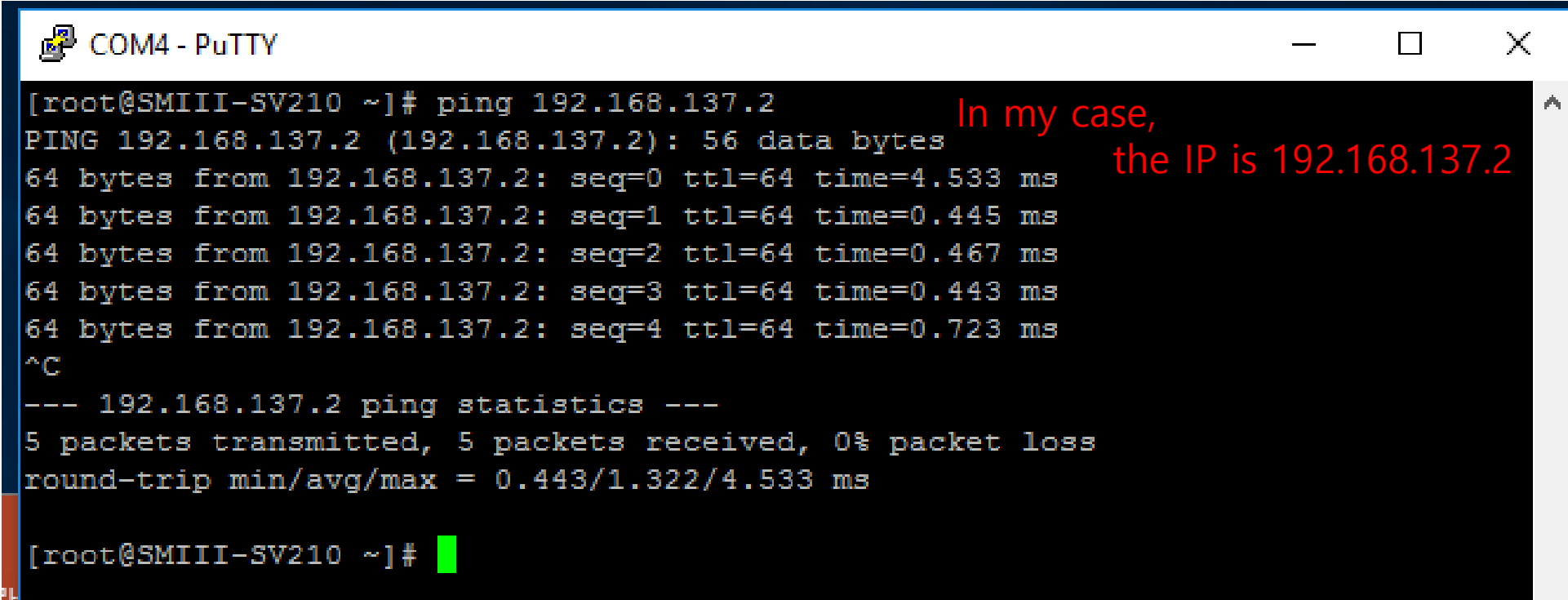


```
COM4 - PuTTY
[root@SMIII-SV210 ~]# ifconfig eth0 192.168.137.3
eth0: link down
[root@SMIII-SV210 ~]# eth0: link up, 100Mbps, full-duplex, lpa 0xC1E1
[root@SMIII-SV210 ~]# █
```

In my case,
the IP is 192.168.137.3

Configure IP

In the Putty, Try the command.
ping @.@.@



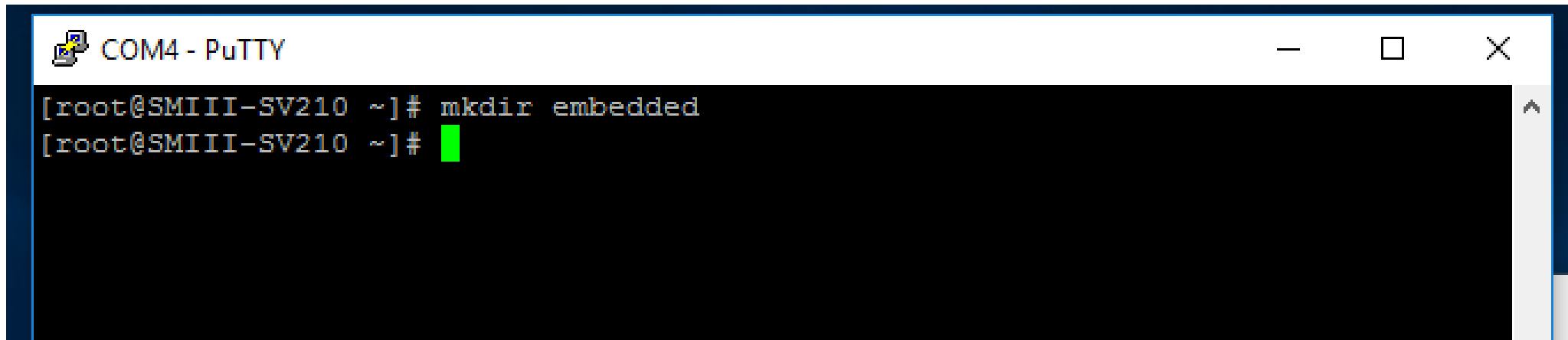
```
COM4 - PuTTY
[root@SMIII-SV210 ~]# ping 192.168.137.2
PING 192.168.137.2 (192.168.137.2): 56 data bytes
64 bytes from 192.168.137.2: seq=0 ttl=64 time=4.533 ms
64 bytes from 192.168.137.2: seq=1 ttl=64 time=0.445 ms
64 bytes from 192.168.137.2: seq=2 ttl=64 time=0.467 ms
64 bytes from 192.168.137.2: seq=3 ttl=64 time=0.443 ms
64 bytes from 192.168.137.2: seq=4 ttl=64 time=0.723 ms
^C
--- 192.168.137.2 ping statistics ---
5 packets transmitted, 5 packets received, 0% packet loss
round-trip min/avg/max = 0.443/1.322/4.533 ms

[root@SMIII-SV210 ~]#
```

In my case,
the IP is 192.168.137.2

Mount nfs

In the Putty, Try the command.
mkdir embedded

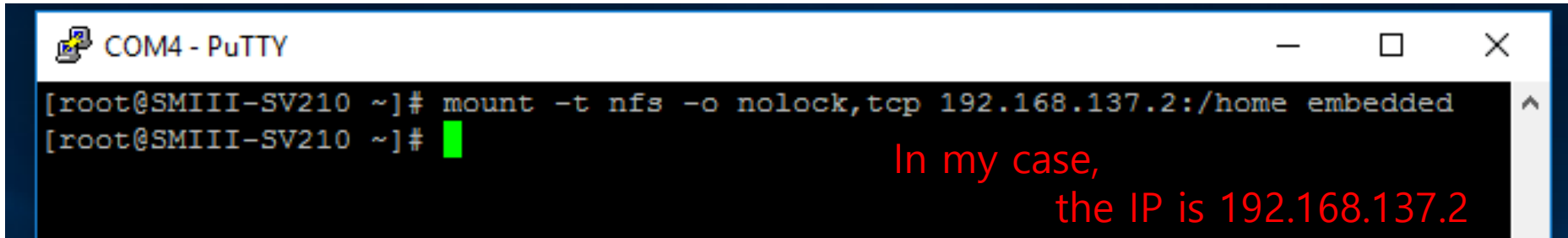


```
COM4 - PuTTY
[root@SMIII-SV210 ~]# mkdir embedded
[root@SMIII-SV210 ~]# █
```

Mount nfs

In the Putty, Try the command.

`mount -t nfs -o nolock,tcp @.@@.@@:/home embedded`



The image shows a screenshot of a PuTTY terminal window titled "COM4 - PuTTY". The terminal displays the following command and prompt:

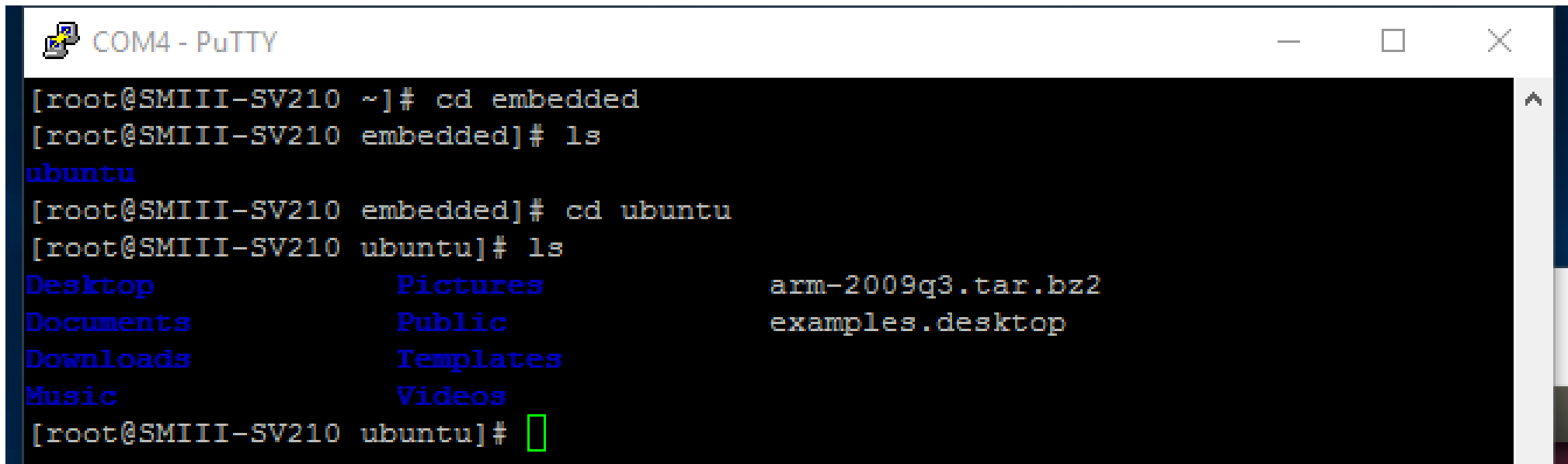
```
[root@SMIII-SV210 ~]# mount -t nfs -o nolock,tcp 192.168.137.2:/home embedded  
[root@SMIII-SV210 ~]#
```

A red cursor is visible on the second line. To the right of the terminal output, there is a red text annotation: "In my case, the IP is 192.168.137.2".

Mount nfs

Done.

You can see Ubuntu(VM) files in the embedded folder on SV210.



```
COM4 - PuTTY
[root@SMIII-SV210 ~]# cd embedded
[root@SMIII-SV210 embedded]# ls
ubuntu
[root@SMIII-SV210 embedded]# cd ubuntu
[root@SMIII-SV210 ubuntu]# ls
Desktop          Pictures          arm-2009q3.tar.bz2
Documents        Public            examples.desktop
Downloads        Templates
Music            Videos
```